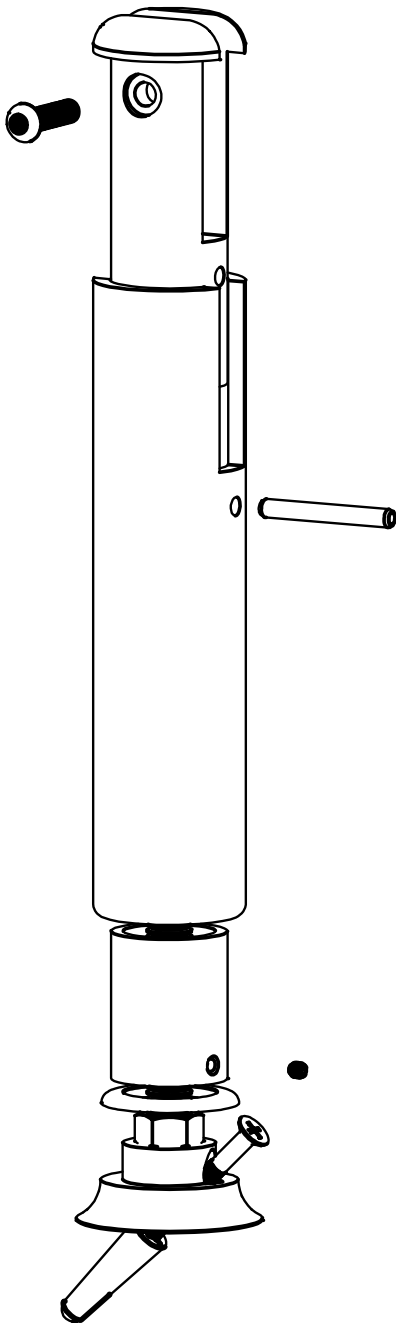
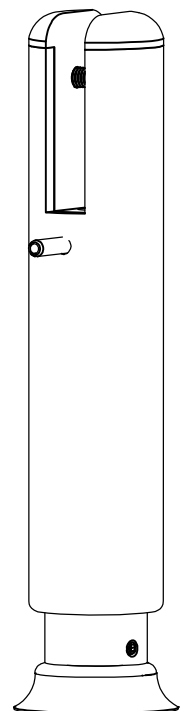


Product Information Sheet

Support DURHAM LEG



- Prior to fitting partition to the wall the Durham Leg needs fitting to the partition.
- Support the partition at the required height and remove the tension pin and the M6 Button Head
- Position the Leg onto the partition at the desired place, mark the hole position and remove for drilling.
- Drill through the partition using a $\varnothing 6.5\text{mm}$ drill, Do Not use the leg as a guide as this may result in damage to the leg and/or threads.
- Reposition Leg to partition and secure using the M6 Countersink Screw.
- Slide the Outer Shroud to the top and fit Tension pin to secure.
- Adjust the Foot until it is in contact with the floor, remove the M4 grub screw in the Inner Shroud.
- Lift the shroud to reveal the foot, drill through with a $\varnothing 5.5\text{mm}$ drill to a depth of 50mm.
- Lift foot to reveal hole and fit the Red wall plug.
- Reposition the foot and secure to floor with No.8x2" woodscrew.
- Reposition the Inner Shroud and secure with M4 Grub Screw.



cobtec
cubicle hardware

Unit 15, Dabble Duck Ind. Est.
Shildon
Co. Durham
UK
DL4 2QN