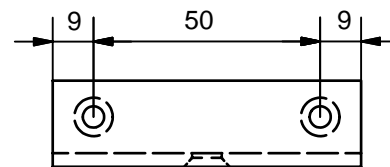
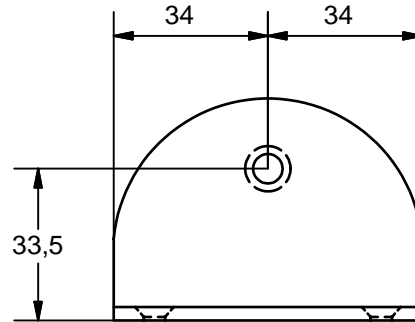
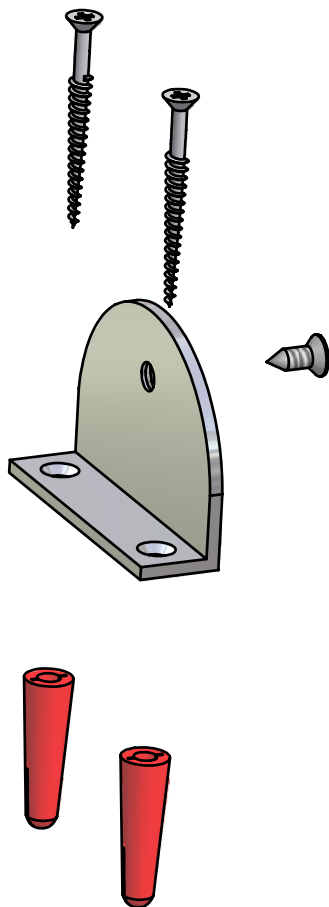


cobtec

cubicle hardware

Unit 8, All Saints Ind Est, Redworth Road, Shildon, Co. Durham, DL4 2RD, ENGLAND
Tel: +44 (0) 1388 775584 Fax: +44 (0) 1388 778893 Email Post@bignall.co.uk Website: <http://www.bignall.co.uk>

PRODUCT SPECIFICATION SHEET FOR: WM3/6 BRACKET



- 1 DETERMINE THE CENTRLINE ON THE WALL.
- 2 POSITION THE BRACKETS ON THE CENTRELINE AND MARK THE HOLE CENTRES.
- 3 DRILL THE HOLES AT $\varnothing 5.50$ MM TO A DEPTH OF AT LEAST 50.00MM.
- 4 INSERT THE WALL PLUGS AND SECURE THE BRACKETS USING THE SCREWS PROVIDED.
- 5 REPEAT STEP ONE AND TWO ON THE FASCIA.
- 6 PILOT DRILL THE HOLES ON THE FASCIA TO A MAXIMUM DEPTH OF 14MM TAKING CARE NOT TO BREAK THROUGH THE PANEL.
- 7 SECURE THE BRACKETS USING THE SCREWS PROVIDED.
- 8 OFFER THE PARTITION UP TO THE BRACKETS ENSURING THE HEIGHT AND LEVEL ARE CORRECT AND PILOT DRILL ENSURING NOT TO BREAK THROUGH THE PANEL.
SECURE THE PARTITION TO THE BRACKETS USING THE SCREWS PROVIDED.